



Coordinating Ministry for Economic Affairs
Republic of Indonesia

ECONOMIC AND POLICY UPDATES

[Investor Relations Unit Presentation Book]

September 2025

Assistant Deputy Minister for Macroeconomic and Fiscal Affairs
Deputy Minister for Economic and Investment Cooperation

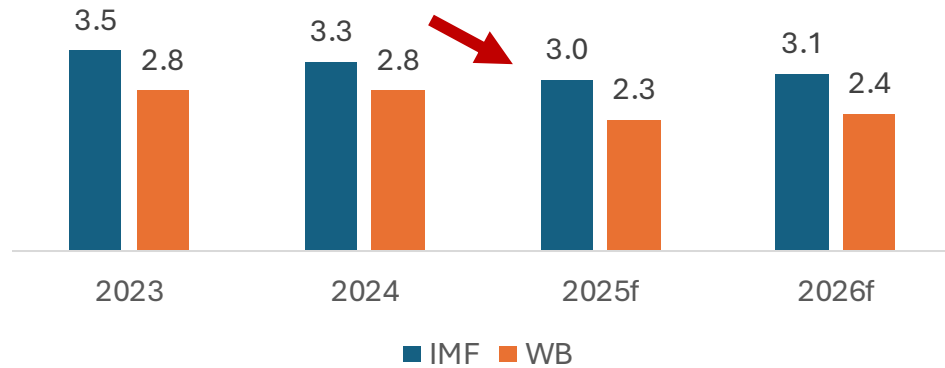
01. ECONOMIC UPDATES



Economic Growth is Predicted to Slow Down In 2025

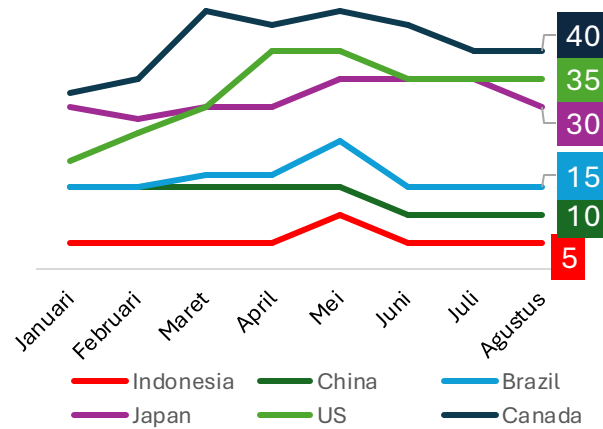
Global economic growth is expected to weaken in 2025 due to ongoing global uncertainties. This slowdown is also affecting emerging market countries, particularly those with strong trade and investment ties to the United States, China, and the European Union.

Economic Growth Projection for 2025 - 2026



Source: GEP World Bank June 2025. WEO IMF July 2025

Recession Probability 2025 (%)



Downside Risk



- A rebound in **effective tariff rates**
- **Geopolitical tensions** could disrupt global supply chains and push commodity prices up
- **Larger fiscal deficits or increased risk aversion** could raise long-term interest rates and tighten global financial conditions.
- **Increased global fragmentation** could reignite volatility in financial markets.

Sumber: WEO IMF July 2025

Economic Growth Forecast

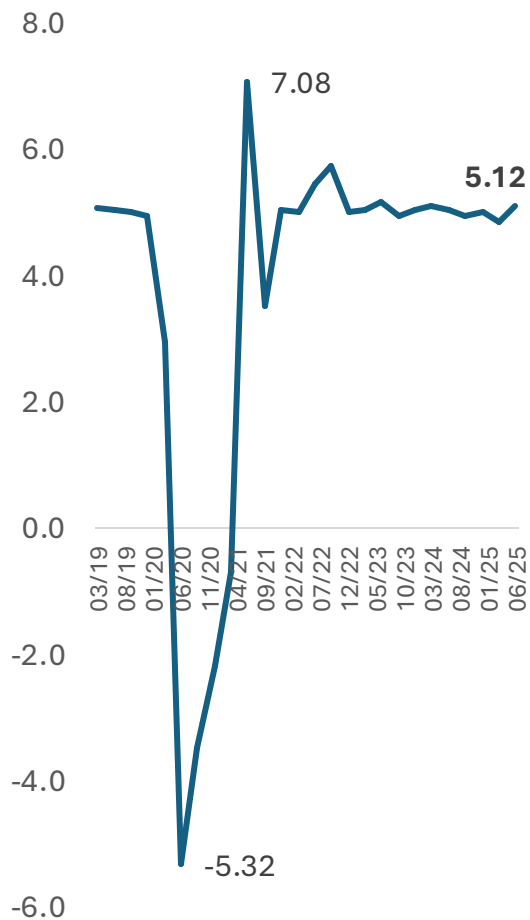
Countries / Area	2024	IMF, July 2025		World Bank, June 2025		ADB, April 2025		OECD, June 2025		Bloomberg, June 2025	
		2025F	2026F	2025F	2026F	2025F	2026F	2025F	2026F	2025F	2026F
World	3.3	↓ 3.00	↑ 3.10	↓ 2.30	↑ 2.40	-	-	↓ 2.90	▬ 2.90	↓ 2.60	↑ 2.80
US	2.8	↓ 1.90	↑ 2.00	↓ 1.40	↑ 1.60	↓ 2.00	↓ 1.90	↓ 1.60	↓ 1.50	↓ 1.40	↑ 1.60
Euro Zone	0.9	↑ 1.00	↑ 1.20	↓ 0.70	↑ 0.80	↑ 1.20	↑ 1.40	↑ 1.00	↑ 1.20	↓ 0.80	↑ 1.10
Indonesia	5.0	↓ 4.80	▬ 4.80	↓ 4.70	↑ 4.80	↓ 5.00	↑ 5.10	↓ 4.70	↑ 4.80	↓ 4.80	↑ 4.90
Japan	0.2	↑ 0.70	↓ 0.50	↑ 0.70	↑ 0.80	↑ 1.20	↑ 1.80	↑ 0.70	↓ 0.40	↑ 0.80	▬ 0.80
China	5.0	↓ 4.80	↓ 4.20	↓ 4.50	↓ 4.00	↓ 4.70	↓ 4.30	↓ 4.70	↓ 4.30	↓ 4.50	↓ 4.10
India	6.5	↓ 6.40	▬ 6.40	↓ 6.30	↑ 6.50	↑ 6.70	↑ 6.80	↓ 6.30	↑ 6.40	↓ 6.30	▬ 6.30
Russia	4.3	↓ 0.90	↑ 1.00	↓ 1.40	↓ 1.20	-	-	↓ 1.00	↓ 0.70	↓ 1.50	↓ 1.20
Brazil	3.4	↓ 2.30	↓ 2.10	↓ 2.40	↓ 2.20	-	-	↓ 2.10	↓ 1.60	↓ 2.00	↓ 1.60

Source: WEO IMF, EAP World Bank, ADO ADB, OECD Economic Outlook, Bloomberg. Data in 2024 are based on the IMF

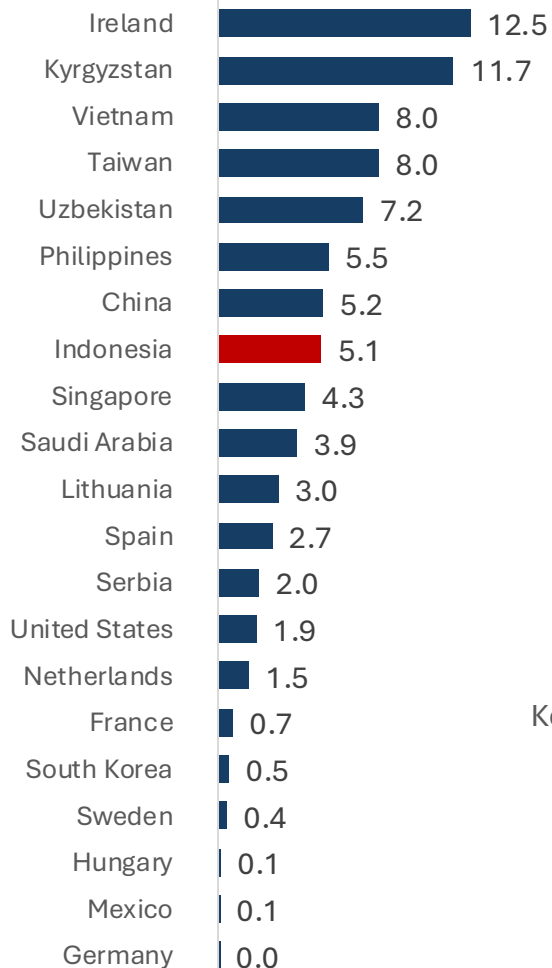
Indonesia's Economy Remains Resilient Amid Global Headwinds

Indonesia's economy grew 5.12% in Q2 2025, supported by Household Consumption, Gross Fixed Capital Formation, and Exports. The manufacturing sector recorded growth of 5.68%

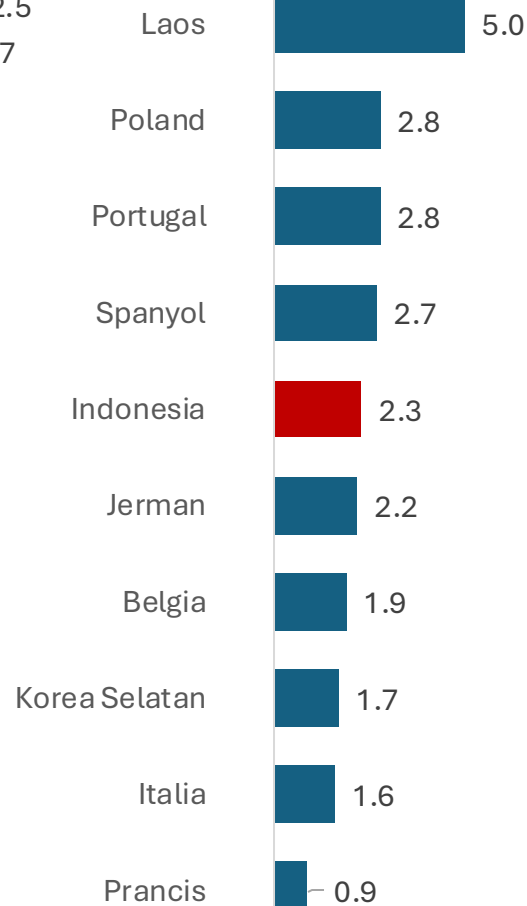
Indonesia's economic growth (%YoY)



Economy growth Q2-2025 (%YoY)



Country's inflation rate August 2025 (%YoY)



GDP Expenditure Growth (% yoy)

	2024	Q1 2025	Q2 2025	Share Q2-25
1. Household Consumption Expenditure	4,94	4,89	4,97	54,25
2. Consumption Expenditure of NPISH	12,48	3,07	7,82	1,35
3. Government Consumption Expenditure	6,61	-1,38	-0,33	6,93
4. Gross Fixed Capital Formation	4,61	2,12	6,99	27,83
5. Export of Goods and Services	6,51	6,78	10,67	22,28
6. Import of Goods and Services	7,95	3,96	11,65	-20,66
PRODUK DOMESTIK BRUTO	5,03	4,87	5,13	100*

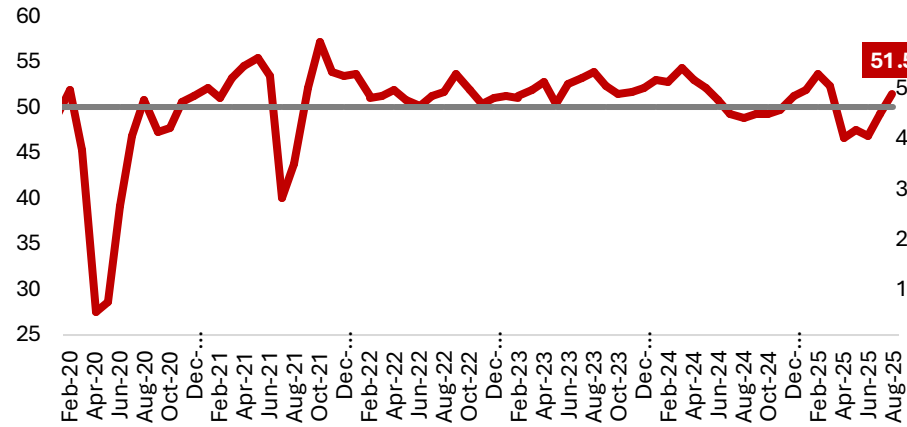
GDP Sectoral Growth (% yoy)

	2024	Q1 2025	Q2 2025	Share Q2-25
A. Agriculture, Forestry, ...	0,67	10,52	1,65	13,83
B. Mining and Quarrying	4,9	-1,23	2,03	8,59
C. Manufacturing	4,43	4,55	5,68	18,67
D. Electricity and Gas	4,77	5,11	0,9	0,97
E. Water supply, Sewerage,...	1,56	0,18	0,82	0,06
F. Construction	7,02	2,18	4,98	9,48
G. Wholesale and Retail Trade..	4,86	5,03	5,37	13,02
H. Transportation and Storage	8,69	9,01	8,52	6,21
I. Accommodation and Food Service	8,56	5,75	8,04	2,7
J. Information and Communication	7,57	7,72	7,92	4,38
K. Financial and Insurance Activities	4,74	3,98	3,2	4,16
L. Real Estate	2,5	2,94	3,71	2,28
M,N. Business Activities	8,38	9,27	9,31	2
O. Public Administration...	6,4	4,78	4,69	3,21
P. Education	3,75	5,03	1,4	2,75
Q. Human Health and Social Work	8,11	5,78	3,8	1,23
R,S,T,U. Other Services	9,8	9,84	11,31	2,15

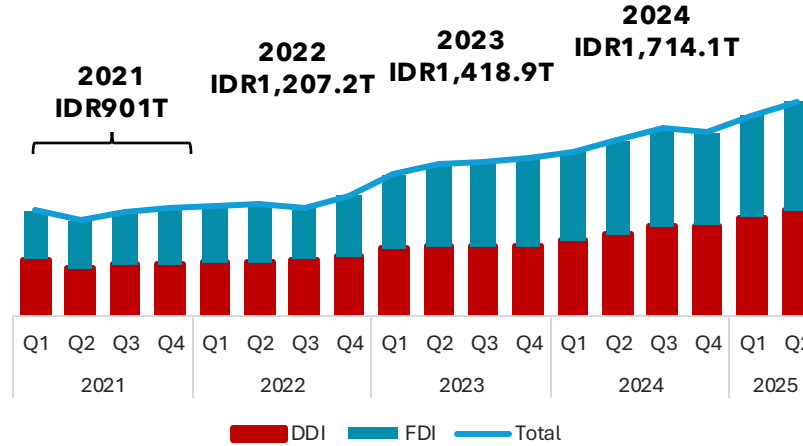
Source: BPS, CEIC

Indonesia's Leading Indicators Exhibit a Favorable Outlook

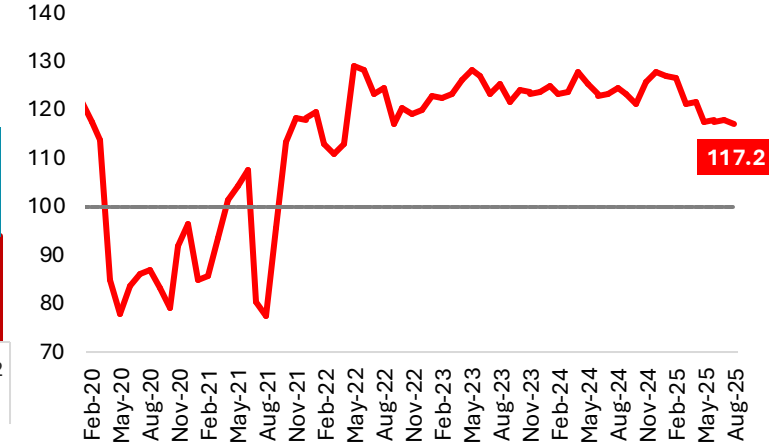
Manufacturing PMI



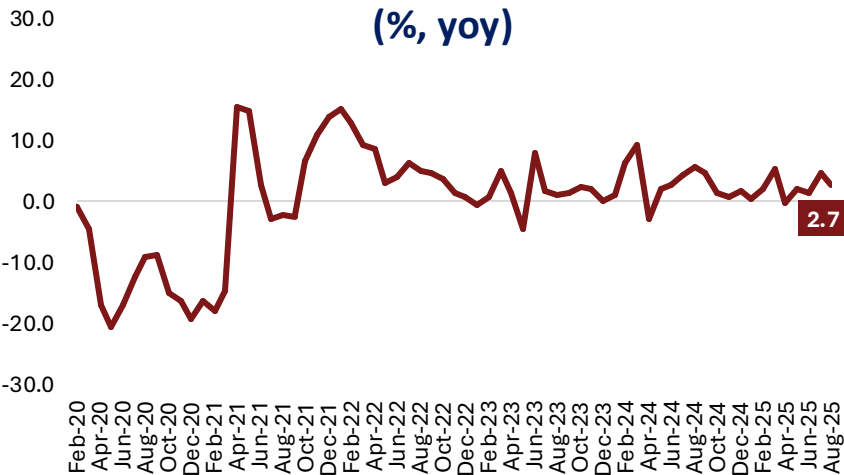
Total Investment (IDR Tn)



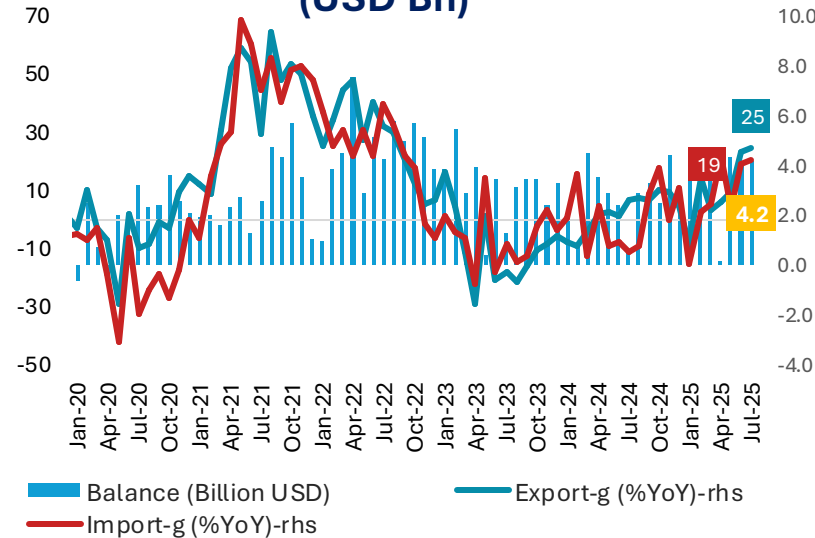
Consumer Confidence Index



Retail Sales (% yoy)



Trade Balance (USD Bn)



Foreign Exchange Reserves (USD Bn)



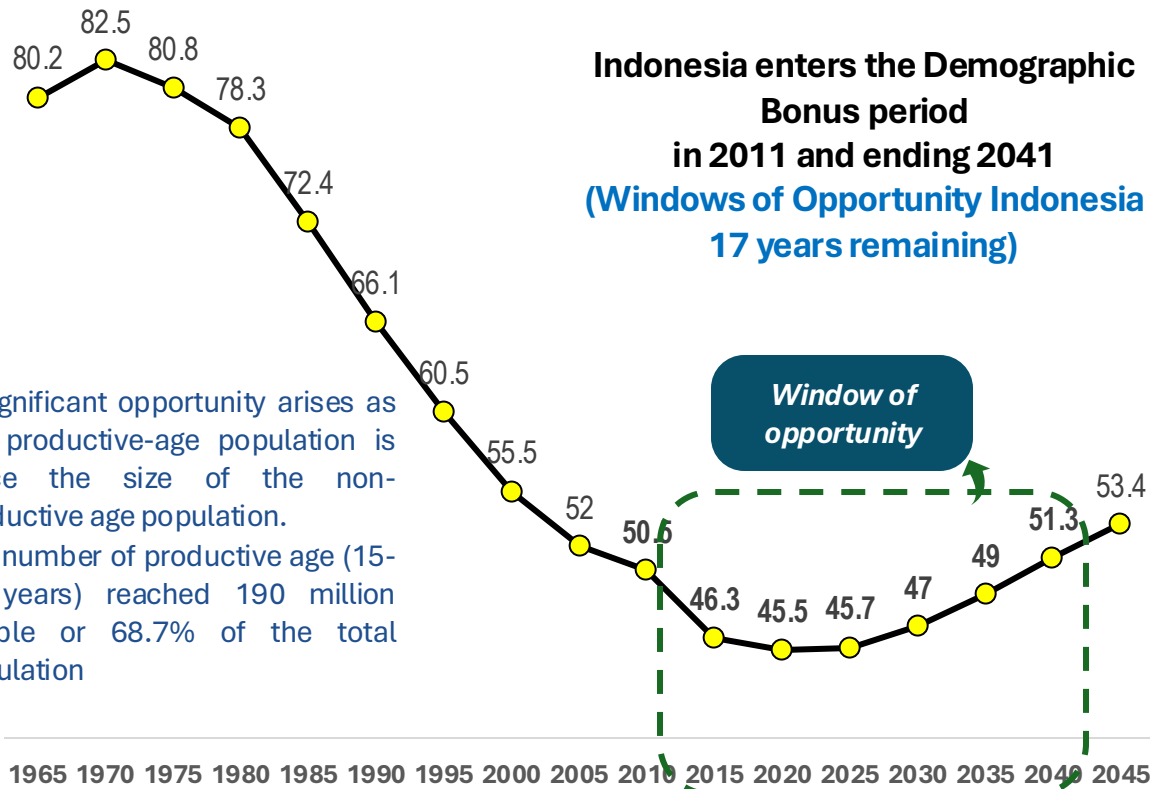
Sources: BI, BKPM, BPS, S&P

02. POLICY UPDATES



Indonesia Has a Demographic Bonus and Abundant Natural Resources

THE PEAK OF INDONESIA'S DEMOGRAPHIC BONUS



Indonesia enters the Demographic Bonus period in 2011 and ending 2041 (Windows of Opportunity Indonesia 17 years remaining)

Window of opportunity

- A significant opportunity arises as the productive-age population is twice the size of the non-productive age population.
- The number of productive age (15-64 years) reached 190 million people or 68.7% of the total population

Dependency Ratio is a comparison between the number of people aged 0-14 years plus the number of people aged 65 years and over (non-productive age population) compared to the number of people aged 15-64 years (productive age).

Source: BPS Preparation of Indonesian Population Projections SUPAS Results 2015-2045

SOCIAL CULTURAL CAPITAL

Harmonious and tolerant – Community Collaboration (Gotong Royong) – Deliberation to reach a consensus – Family – Social solidarity – Independent spirit – Cultural diversity

MARITIME WEALTH



16% of the world's coral reefs



25,000 species of flowering plants (10% of the world)



Capture fisheries potential 12 million tons



The largest mangrove forest 3.36 million hectares

Geographical Location Advantages



NATURAL WEALTH



125.57 million hectares of forest areas



Nickel with ore reserves 5.24 billion tons



Coal reserves 36.30 billion tons



Renewable energy potential 3,716 GW

Source: Bappenas

Indonesia Gold Vision 2045 : Become a Sovereign, Advanced and Sustainable Country



1. Income per capita equivalents to developed countries
2. Poverty declines and inequality decreases
3. Leadership positions and international influence increase
4. HR competitiveness increases
5. GHG emission intensity towards NZE

TRANSFORMATION

1. **Social Transformation:** Focusing on the development of outstanding Indonesian individuals;
2. **Economic Transformation:** Aiming for the nation to become high-income;
3. **Governance Transformation:** Emphasizing adaptive and principled regulations, as well as governance that is characterized by integrity, agility, and collaboration.

FOUNDATION OF TRANSFORMATION

4. Legal Supremacy, Stability, & Diplomatic Strength
5. Socio-Cultural and Ecological Resilience

TRANSFORMATION IMPLEMENTATION FRAMEWORK

6. Equal and Quality Territorial Development
7. Quality and Environmentally Friendly Facilities and Infrastructure
8. Development Sustainability

Development Phase

First Phase
(2025-2029)

Strengthening the foundation of transformation

Second Phase
(2030-2034)

With the establishment of a strong foundation, Indonesia is set to accelerate its economy

Third Phase
(2035-2039)

Indonesia starts steps to expand globally

Fourth Phase
(2040-2045)

Indonesia succeeds in realizing Indonesia Gold 2045 vision

Source: RPJPN 2025-2045

Main Government Policies to Promote Strong, Socially Inclusive, and Environmental-Friendly Economic Growth

This policy framework aims to ensure strong, inclusive, and sustainable economic growth by balancing conventional economic revitalization, fostering new economic engines, and enhancing human resource productivity.

NEW PATH OF GROWTH: HIGH GROWTH, INCLUSIVE, & SUSTAINABLE

1st ENGINE
Revitalizing the
Conventional Economic
Mechanism



2nd ENGINE
Building a New Economic Engine



**3rd ENGINE AS THE
FOUNDATION**
Enhancing Productivity &
Competitiveness of Human
Resources

ENABLER FOR ECONOMIC GROWTH



Macroeconomic
Stability



Maintaining
People's
Purchasing Power



Efficiency &
Investment Climate
Support



Strengthening &
Deepening the
Financial Sector



Enhancing Social
Security & Social Safety
Nets

Short-Term Mitigation and Policy Response Amidst Weakening Global Economic Prospects

Q1 2025 Economic Stimulus

Incentive Type

Details

Electric Discounts (Jan – Feb)	50% electricity discount for two months for households with installed power between 450 VA and 2200 VA
Automotive Incentive	<ul style="list-style-type: none"> ➤ Battery-Based Electric Vehicles (KBLBB): <ul style="list-style-type: none"> • 10% VAT exemption for CKD (Completely Knocked Down) KBLBB. • 15% Luxury Goods Sales Tax (PPnBM) exemption for CBU and CKD imported KBLBB. • 0% Import Duty for CBU (Completely Built-Up) KBLBB. ➤ Hybrid vehicles receive a 3% Luxury Goods Sales Tax (PPnBM) incentive.
Property Incentive (Jan – July 2025)	For residential properties valued up to IDR 5 billion , a 100% VAT discount applies to the first IDR 2 billion.
MSME Incentive	Extension of the validity period of the 0.5% final corporate tax exemption for MSMEs with a monthly turnover of less than IDR 500 million
Incentive for Intensive Sector Workers Industry	<ol style="list-style-type: none"> 1. Government-borne Income Tax (PPH21) incentives for labor-intensive sector workers earning up to IDR 10 million per month. 2. Financing facilities for machine revitalization to boost productivity with a 5% interest subsidy. 3. Extension of 50% Discount on Work Accident Insurance is reinstated for 6 months (Aug' 25- Jan '26) for Labor Intensive Sector Workers

Q2 2025 Economic Stimulus

Incentive Type

Details

Transportation Discounts (5 June – 31 July)	<ol style="list-style-type: none"> 1. Train Ticket Discount (30%) 2. Plane Ticket (PPN DTP 6%) 3. Sea Transportation Discount (50%) <p>Budget Allocation Rp0,94 Tn</p>
Toll Tariffs Discounts (5 June – 31 July)	20% toll tariff discount with estimated beneficiaries for 110 million vehicle. Budget Allocation IDR 0,65 Tn (Non-APBN)
Intensification of Social Assistance and Food Aid (June – July)	<ol style="list-style-type: none"> 1. Additional food card program of Rp200k/month 2. Food assistance of 10 kg/month <p>Est. beneficiaries for 18.3 million households. Budget Allocation IDR 11,93 Tn</p>
Wage Subsidy Assistance (June – July)	<ol style="list-style-type: none"> 1. Rp300rb for 17,3 million workers 2. 288k teachers from Kemendikdasmen 3. 277k teachers from Religion Ministry <p>Budget Allocation IDR 10,72 Tn</p>
Extension of Discount on Work Accident Insurance Contributions (Feb – May)	Extension of 50% Discount on Work Accident Insurance is reinstated for 6 months for Labor Intensive Sector Workers Budget Allocation IDR 0,2 Tn (Non-APBN)

Source: Coordinating Ministry for Economic Affairs

STRATEGIC POLICY: INDONESIA'S ECONOMIC STIMULUS IN 2025

1

Accelerate MAKAN BERGIZI GRATIS (MBG)

Realization 25 Juli 2025: 2.333 provider & beneficiary 7.30 million budget absorption Rp6T from 76,42T

Target 17thousand provider & 51million beneficiary in September 2025; 25thousand provider & 75million beneficiary in November 2025



2

'PADAT KARYA TUNAI' Program in the Public Works and Transportation Sector



3

Accelerate Implementation 'KREDIT INVESTASI PADAT KARYA' to revitalization of production machines



4

STIMULUS FOR HOUSING SECTOR

- FLPP Program
- Housing credit program PPN DTP to buy housing 100%
- Self-support Housing Stimulus Assistance Program
- BPJS Employment Housing Program for Laborers

5

Accelerate the regular BANSOS distribution in Q3 dan Carry Over Stimulus Ekonomi Q2

- Food Aid (Bapanas Bulog)
- Additional Basic Food Cards (Ministry of Social Affairs)
- salary subsidise (Ministry of Manpower, Ministry of Primary and Secondary Education, Ministry of Religion)



6

STIMULUS FOR TOURISM SECTOR

through the provision of national events and bundling of tour packages for the 2025-2026 Christmas and New Year holidays, as well as transportation sector discounts for trains, ships, and toll rates.



Economy Package 2025” (8+4+5 Program)

8 Programs: “8 Accelerated Programs in 2025”

1. **Government Assistance for College Graduates Internship Program:** maximum 1-year fresh graduates) for 20,000 college graduates.
2. **Government-borne Income Tax (PPh21) incentives:** for the tourism sector workers in the Oct-Dec 2025 Period: 552,000 workers.
3. **Food Aid program:** Oct - Nov 2025: 18.3 million households.
4. **Discount on Work Accident Insurance (JKK) and Death Insurance (JKM) Contributions:** for non-wage recipients in the transportation sector for 6 months: 731,361 workers.
5. **Program Manfaat Layanan Tambahan (MLT) Perumahan BPJS Ketenagakerajaan:** 1,050 housing units starting Oct 1, 2025.
6. **Program Padat Karya Tunai (Cash for Work): Program Padat Karya Tunai (Cash for Work):** Ministry of Transportation (15,798 workers); and Ministry of Public Works (199,623 workers). Total of 215,421 workers.
7. **Deregulation Program (PP28/2025):** 1) Completion of Derivative Rules; 2) Integration of K/L System to OSS; 3) Addition of Digital RDTR & Integration to OSS. Total of 100 RDTR, @Rp4 billion.
8. **Program Perkotaan (Pilot Project DKI Jakarta):** improving the quality of housing and providing a marketing platform for the Gigs Economy (expansion to West Java, Central Java, East Java, Banten, Bali, Manado, Makassar, and Batam)

4 Programs: Carried Forward to 2026

1. **Adjustment of the Utilization Period and Beneficiaries of 0.5% Final Income Tax for MSME Taxpayers until 2029**
2. **Extension of Government-borne Income Tax (PPh21) incentives: for the tourism sector workers (2026 budget)**
3. **Extension of Government-borne Income Tax (PPh21) incentives: Workers in Labor-Intensive Industries (2026 budget)**
4. **Extension and expansion of Discount on JKK and JKM Contributions for all Non-Wage Recipients (BPU)**

5 Programs: Employment Absorption

1. **Operasional for KDKMP (Koperasi Desa/ Kelurahan Merah Putih):** More than 1 million in the End of 2025 (1,385,279 people)
2. **Replanting of 6 strategic commodities** in Perkebunan Rakyat (1,635,167 people in 3 years) and **down streaming of 11 general commodities** in core and plasma plantations (4,158,988 people).
3. **Kampung Nelayan Merah Putih in 100 locations:** 270 people for each location, total 27.000 people in 2025.
4. **Revitalization Tambak Pantura 20,000 Ha:** 132.000 people (2025-2028)
5. **Modernization 1.582 Kapal Nelayan:** 600.188 people (2025-2027)

Synchronized Policies to Strengthen Inflation Controlling Efforts

MONETARY POLICY

Support for pro-stability and pro-growth monetary policies

- Stabilization of the Rupiah exchange rate through intervention in the foreign exchange market on spot transactions, Domestic Non-Deliverable Forward (DNDF), and Government Securities (SBN) in the secondary market;
- Monetary operations including optimization of Bank Indonesia Rupiah Securities (SRBI), Bank Indonesia Foreign Currency Securities (SVBI), and Bank Indonesia Foreign Currency Sukuk (SUVBI)



FISCAL POLICY

Optimization of State Budget as shock absorbers

- Energy Subsidies and Compensation
- Food Security Budget including optimization of Government Rice Reserves (SPHP distribution)
- Social Assistance Program, including food assistance
- Food distribution facilitation
- Optimization of APBD and BTT

INFLATION CONTROL EFFORTS

K1 Price Affordability



- Improving the implementation of cheap market operations/easy food movements and the Food Supply and Price Stabilization (SPHP) program
- Food assistance, social protection, subsidies and energy compensation

K2 Supply Availability



- Strengthening Government Food Reserves (CPP)
- Access to KUR financing and Agricultural Machinery Credit
- Provision of subsidized fertilizers

K3 Smooth Distribution



- Facilitating the distribution of strategic food commodities
- Optimizing the sea toll program to reach 3TP areas
- Providing assistance for logistics costs

K4 Effective Communication



- Orchestration of TPID for regional inflation control efforts by the Ministry of Home Affairs through weekly coordination meetings
- Implementation of TPIP-TPID Coordination Meetings per region which are carried out back-to-back with GNPIP.



CPI INFLATION
2.5±1%

INFLATION 2025
MAINTAIN WITHIN THE
TARGET



Enhancing Indonesia's Economic Resilience: The Implementation of PP No. 8/2025 on Export Proceeds Management

To enhance the management of Export Proceeds from Natural Resources (DHE SDA), the Indonesian government issued Government Regulation No. 8/2025 on February 17, 2025. This regulation requires exporters in the mining (excluding oil and gas), plantation, forestry, and fisheries sectors to deposit 100% of their DHE SDA into the Indonesian financial system for 12 months.

1

REGULATED SECTORS:

Mining, Plantations, Forestry and Fisheries

5

INSTRUMENTS FOR DHE SDA PLACEMENT:

1. Special DHE SDA Accounts
2. Banking Instruments
3. Financial Instruments from LPEI
4. Bank Indonesia Instruments

9

DHE SDA SUPERVISION AND IMPLEMENTATION:

- Supervised by the Directorate General of Customs and Excise, the Ministry of Finance, Bank Indonesia, and the Financial Services Authority (OJK).
- Monitored through an integrated information system.

2

EXPORT VALUE SUBJECT TO FOREIGN EXCHANGE PROCEEDS FROM NATURAL RESOURCES (DHE SDA):

Applicable to export values of USD250,000 or more

6

PERMITTED USES OF DHE SDA:

1. Conversion to Rupiah
2. Government obligations
3. Foreign Currency Dividends
4. Payment for Imported Goods and Services
5. Repayment of Foreign Currency Loans

10

SANCTIONS FOR NON-COMPLIANCE:

Suspension of Export Services

3

DHE SDA DEPOSIT REQUIREMENT:

Export proceeds must be deposited into a special account no later than the end of the third month after the PPE (Export Declaration) is issued.

7

DHE SDA UTILIZATION BY EXPORTERS:

Can be used by exporters and counted as a reduction in the required DHE SDA placement amount.

11

REGULATORY OVERSIGHT FOR EXPORTERS:

Exporters will be monitored by Bank Indonesia and/or the Financial Services Authority (OJK).

4

DHE SDA PLACEMENT OBLIGATION:

100% of DHE SDA must be placed for 12 months, except for the oil and gas sector

8

INCENTIVES FOR PLACING DHE SDA:

- Special tax rates for exporters.
- Incentives for exporters, export-import financing institutions (LPEI), and banks.
- Exporters may qualify as "exporters with good reputation", granting them additional benefits.

12

TRANSITIONAL PROVISIONS:

DHE received after the implementation of PP 8/2025 will follow the new regulations, regardless of whether the PPE date is before or after the regulation takes effect.

Deregulation of Import Policies: Strengthening Indonesia's Trade Competitiveness and Economic Growth

Following the President's instructions on deregulation policies aimed at facilitating trade for businesses, enhancing Indonesia's competitiveness, creating jobs, and accelerating investment in labor-intensive sectors to drive economic growth, new regulations on Import Policies and Regulations have been established.

Deregulated Import Commodity Groups (482 HS)



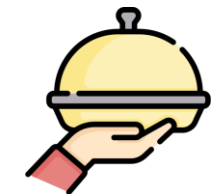
Industrial Raw Materials/Auxiliary Materials (29 HS)

- Subsidized Fertilizer
- Other Fuels
- Plastic Raw Materials
- Saccharin, cyclamate, alcohol-containing fragrances
- Certain chemicals
- Pearls



Competitive Industrial Products (10 HS)

- Footwear
- Two-wheeled and Three-wheeled Bicycles



National Program Support Products (2 HS)

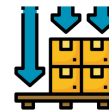
- Food Tray



Forestry Product (441 HS)

Import Deregulation Policy Output

Ministry of Trade (MoT) Regulation No. 36 of 2023 in conjunction with Ministry of Trade Regulation No. 8 of 2024 will be revoked, and the following will be issued:



MoT Regulation No 16 of 2025 on Import Policies and Regulations for **General Import Provisions**



Commodities Clustered Based MoT, as detailed :

1. MoT Regulation No 17 of 2025 on Import Policy and Regulation for **Textile and Textile Production**;
2. MoT Regulation No 18 of 2025 on Import Policy and Regulation for **Agriculture and Farming Goods**;
3. MoT Regulation No 19 of 2025 on Import Policy and Regulation for **Salt and Fish Commodity**;
4. MoT Regulation No 20 of 2025 on Import Policy and Regulation for **Chemicals, Hazardous Materials, and Mining Materials**;
5. MoT Regulation No 21 of 2025 on Import Policy and Regulation for **Electricity Goods and Telematics**;
6. MoT Regulation No 22 of 2025 on Import Policy and Regulation for **Certain Industrial Goods**;
7. MoT Regulation No 23 of 2025 on Import Policy and Regulation for **Consumption Goods**; and
8. MoT Regulation No 24 of 2025 on Import Policy and Regulation for **Used Goods and Non-Hazardous and Non-Toxic Waste**.

Utilizing Local Currency Transaction (LCT) to Maintain Indonesian Exchange Rate Stability

Implementation Progress

- Currently, the implementation of Local Currency Transaction (LCT) cooperation between Indonesia has been established with Malaysia, Thailand, Japan, China, South Korea, and United Arab Emirates.
- Singapore and India are still in the process of negotiating their Operational Guidelines.
- In 2024, LCT transactions across the majority of partner countries exhibited a consistent upward trend, reaching a recorded total of USD 16.23 billion



STRENGTHENING LCS INTO LCT

<i>Line of Bussiness</i>	Current Account, Capital Account, and Financial Transaction
Scope of Collaboration	Money Market, Foreign Exchange, including Cross-Border Payment
Expand Participants	LCT (including QR) and ACCD Bank users
Currency Arrangement	FEA Flexibilities and Pricing Credibility



LCT NATIONAL TASK FORCE PILLAR

Trade and Direct Investment

Banking and Financial Markets

Expanding the use of LCT and Payment Transactions between countries

Risk-Based Business Licensing

Indonesia has recently issued Government Regulation No. 28 of 2025 (PP 28/2025), which revokes the previous PP No. 5 of 2021. The new regulation strengthens the Risk-Based Business Licensing framework, aiming to provide businesses with clearer procedures, greater legal certainty, and a more transparent regulatory environment

3 major changes in PP No 28/2025



Implementation of service time (SLA/Service Level Agreement) in the process of issuing business permits



Implementation of Fictitious-Positive policies



The licensing process is carried out electronically through the OSS RBA system

Single Preference Principle

PP 28/2025 is a single reference; there are no additional requirements or permits issued by ministries, institutions, regional governments, or area managers that are not regulated in PP 28/2025

Regulation in PP 28/2025

Consists of 14 chapters:

- Two new chapters added (Basic Requirements and PBUMKU)
- Basic requirement reform
- Simplification of NSPK chapters and adjustment of sector names according to UUCK (Job Creation Law)
- Improvement and completion of norms

Improvement of Annexes I – IV:

- Memberikan kejelasan
- Substantial improvements to Annexes I and II
- Details of the requirements and obligations of PB and PB UMKU

Risk-Based Business Licensing Development

June 2025

Issuance of Government Regulation No. 28 of 2025



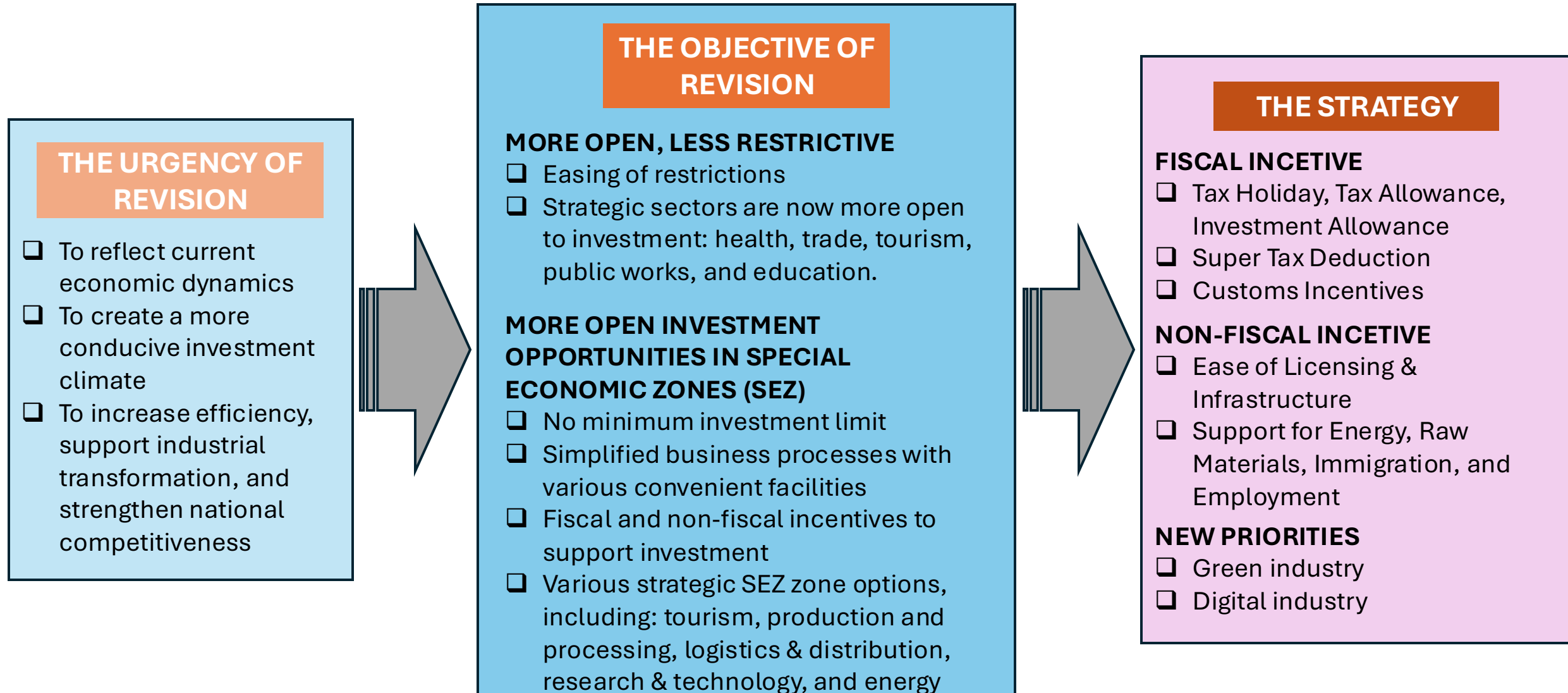
June – October 2025

Implementation process of Government Regulation No. 28 of 2025:

- Issuance and adjustment of Implementing Regulations (Ministerial Regulations/Technical Agency Regulations)
- Adjustment of OSS and INSW Systems

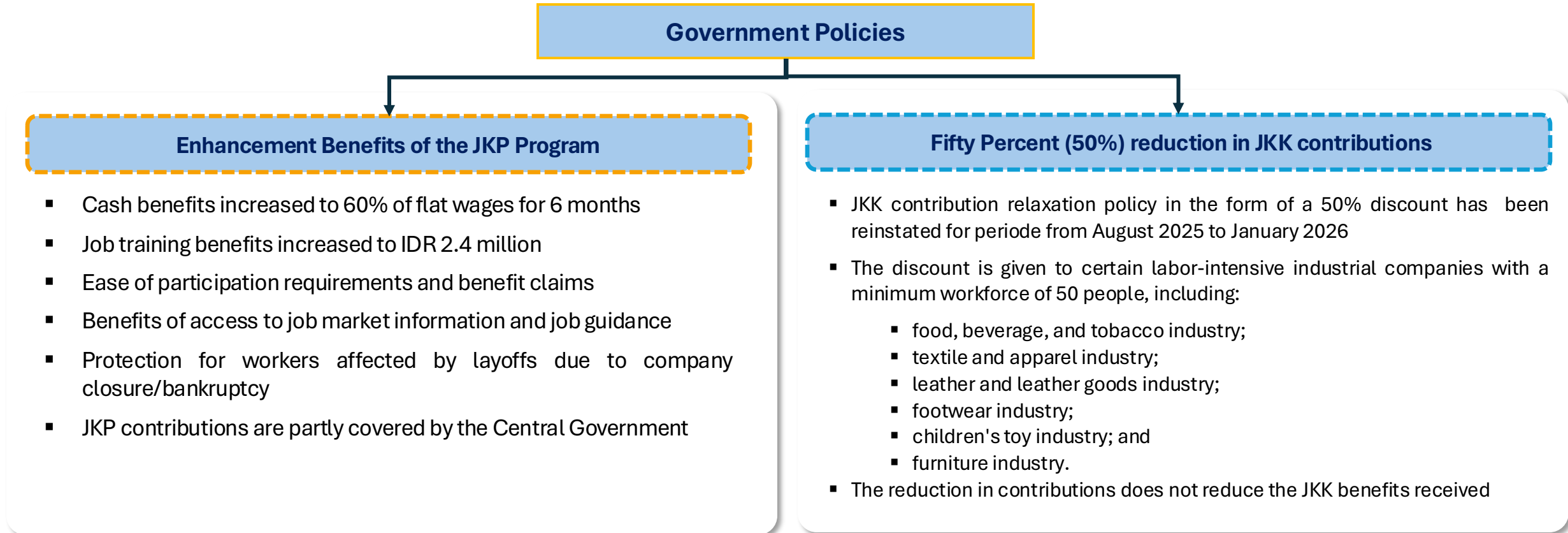
Policy Direction of the PP 10/2021 JO. PP 49/2021

Towards a Competitive and Global-Ready Investment Ecosystem



Policy Support in the Field of Manpower

One of the policy packages related to economic stimulus in order to maintain business continuity and provide protection for workers from the risk of layoffs is the policy of providing a reduction in Jaminan Kecelakaan Kerja (JKK)/Work Accident Insurance contributions, and protection for laid-off workers through the enhancement benefit of Jaminan Kehilangan Pekerjaan (JKP)/Job Loss Insurance Program.

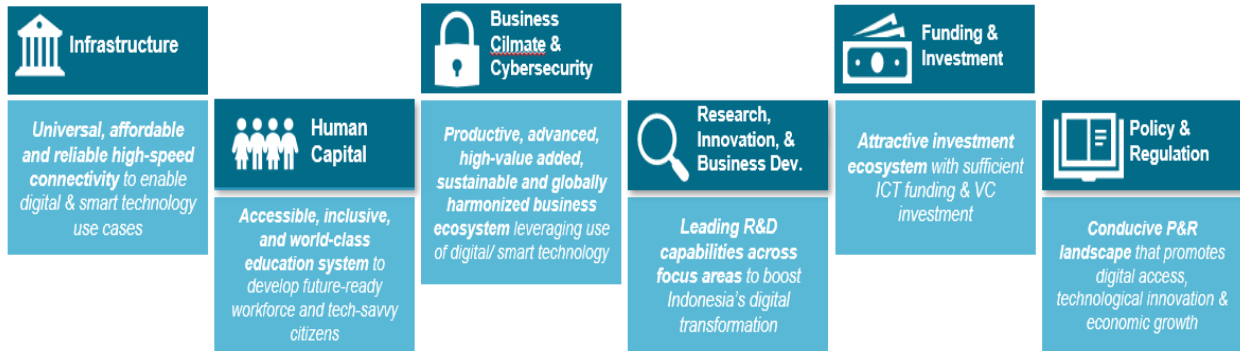


This employment policy effective as of February 2025 based on: (i) Government Regulation No. 6 of 2025 on Amendments to Government Regulation No. 37 of 2021 concerning the Implementation of the Jaminan Kehilangan Pekerjaan (JKP)/Job Loss Insurance Program, and (ii) Government Regulation No. 7 of 2025 on Adjustment of Jaminan Kecelakaan Kerja (JKK)/Work Accident Guarantee Contributions for Certain Labor-Intensive Industrial Companies in 2025.

Driving Digital Transformation: Indonesia's Comprehensive Strategy for Economic Growth

DOMESTIC

- Coordinating Ministry for Economic Affairs has launched the White Paper on the National's Digital Economy Development Strategy on December 6, 2023.
- The white paper aims to serve as guide for related stakeholders in developing the digital economy with a timeline until 2030 and is intended to be a living document.
- It outlines six main pillars for the development of the digital economy, which are: (1) Infrastructure; (2) Human Resources; (3) Business Climate and Cybersecurity; (4) Research, Innovation, and Business Development; (5) Funding and Investment; and (6) Policies and Regulations



60+ INITIATIVES WITH MILESTONES, JOINTLY LED BY GOVERNMENT AND BUSINESS

30 new gov't-led initiatives across ministries

8 new business-led initiatives

24 current gov't-led initiatives across ministries

6 current business-led initiatives

Source : White Paper on The National's Digital Economy Development Strategy

REGIONAL

- The White Paper on the National's Digital Economy Development Strategy has a central role as a guide for determining Indonesia's position in international forums, such as the ASEAN Digital Economy Framework Agreement (DEFA) and the Indo-Pacific Economic Framework (IPEF-Digital Economy Cluster)

ASEAN Digital Economy Framework Agreement

9 Core DEFA Provisions

Digital Trade Paperless trade, interoperable single windows, electronic transferrable records, electronic invoice	Cooperation on emerging topics Regulating emerging technology (e.g., AI, blockchain)
Cross-border E commerce Fair treatment of digital goods and services, facilitation for cross-border small shipments	Competition policy Cooperation on competition policy to ensure fair playing field
Payments Interoperable payment systems, comparable regulatory requirements & barriers	Cross-border data flows and data protections Personal data protections, common data classifications, source code, cross-border data flows
Digital ID and authentication Technical interoperability, mutual recognition & legal standing	Online safety and cybersecurity Online consumer protection, fraud protection, online dispute resolution, alignment on cybersecurity standards and protections, cross-border cooperation
Talent mobility and cooperation Labor mobility for digital talent & entrepreneurs, accreditations, cooperation on technical skills	

Indo-Pacific Economic Framework (IPEF-Digital Economy Cluster)

- The United States initiative launched by President Biden on May 23, 2022
- There are 14 participating countries: US Australia, Brunei Darussalam, Fiji, Philippines, India, Indonesia, Japan, South Korea, Malaysia, New Zealand, Singapore, Thailand, and Vietnam.

4 Pilar IPEF

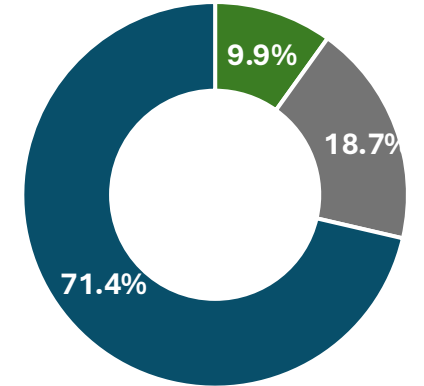


The National Strategic Project (PSN)

Based on Coordinating Minister Regulation Number 12 of 2024, there are 228 Projects and 16 Programs as PSN with an estimated total investment value (CapEx) of IDR 6.480,5 trillion



Est. Total Investment Value (Construction)

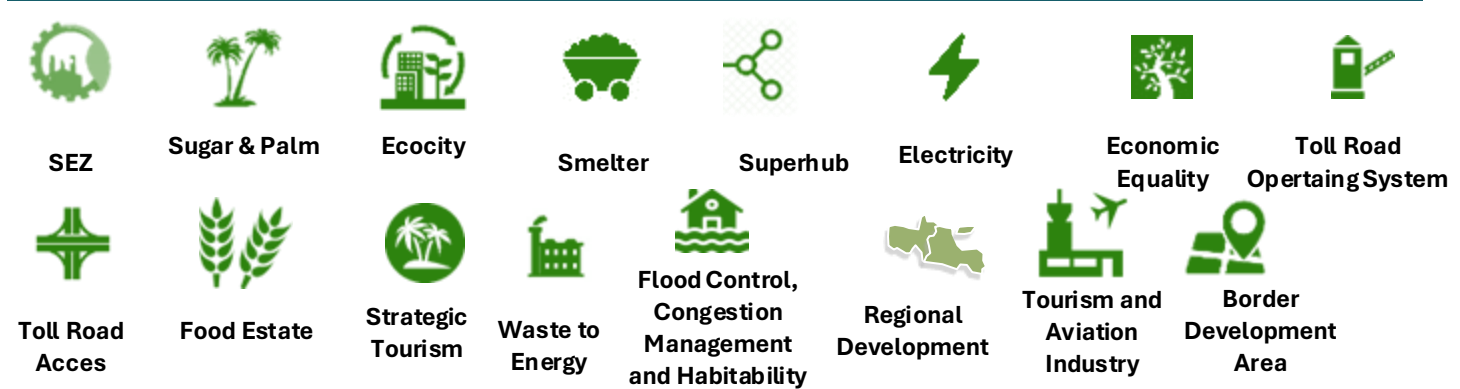
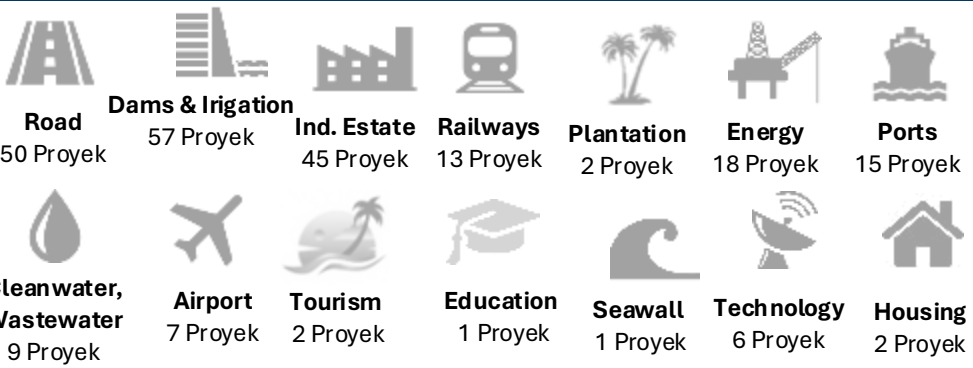


■ State Budget ■ SOE Budget ■ Private

Source: Committee for Acceleration of Priority Infrastructure Delivery (KPPIP)

14 Sectors of PSN

16 Programs




Special Economic Zones Promote Inclusive and Sustainable Economic Growth


7 SEZs in Java and 18 SEZs outside Java (13 Industrial SEZs, 12 Service SEZs)


 Investment realization (cumulative) amounted to Rp.294.4 trillion


 Employment absorption of 187 thousand worker

Cumulative achievements of the
SEZ until June 30, 2025
IDR294,4T

 Business Operator
Realization
IDR31,6T (10,8%)

Business Entity
(tenant) Realization 
IDR262,7T (89,2%)

 Export realization data from SEZs continues to increase, reaching IDR82.04 trillion in Q2-2025.

 **Largest exports:** Galang Batang SEZ (alumina), Kendal SEZ (anodes), Gresik SEZ (copper)

Development of SEZs



Increasing Exports and Import Substitution

Export-competitive industries and halal industries



Industrial Downstreaming

To increase added value by processing raw materials into high value-added goods



Acceleration of Industry 4.0 Implementation

Automation-based manufacturing industry



Accelerating the Development of the Service Sector

Digital industry, information technology, finance, education, and health services



Equitable Development (Inclusive)

Development of industrial centers in the regions to spur economic growth



Promoting Trade Surplus

Import substitution industries, such as chemicals, machinery, and electronics, including the development of the service sector, have been causing foreign exchange outflows.



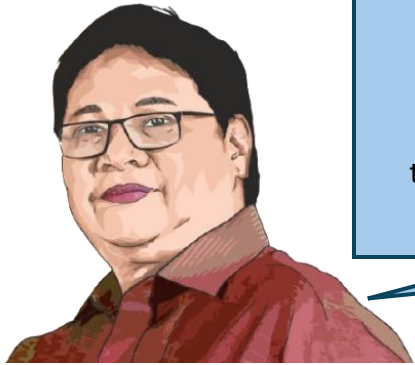
Resilience and Sustainability

Green Economy, Blue Economy, and Circular Economy Development

Source: Special Economic Zones

Energy Transition and Green Economy Task Force: Supporting Indonesia's 2025-2029 Green Economic Transformation

1 Background



A National Energy Transition Task Force is needed, encompassing initiatives such as **AZEC, JETP, and other policies related to energy transition and the green economy**, to ensure stronger synergy among various financing schemes, investments, and sustainable energy transition policies. This will support Indonesia's decarbonization targets and the development of a green economy.

Airlangga Hartarto
Coordinating Minister for Economic Affairs

2 Main Objective

To support the realization of a green economic transformation, as outlined in the 2025–2029 National Medium-Term Development Plan (RPJMN)

3 Roles and Responsibilities

THE ENERGY TRANSITION AND GREEN ECONOMY TASK FORCE

- **Develop a roadmap and policies** for the energy transition and green economy, including decarbonization.
- **Harmonize, adapt, and formulate regulations** that support the energy transition and green economy.
- **Ensure the effective implementation** of policies and regulations related to the energy transition and green economy.
- **Identify and coordinate financing mechanisms** from domestic and international sources to support the energy transition and green economy.
- **Promote investment and technology transfer** in the sustainable energy sector through collaboration with national and international strategic partners.
- **Manage the social, economic, and environmental impacts** of the energy transition and green economy, including those affecting the workforce in impacted sectors.
- **Develop human resource and research capacity** to support the energy transition and green economy.



JETP Indonesia Stands as The Largest Individual Energy Transition Financing Effort

On 16 November 2022, the Government of Indonesia (GoI) and the International Partners Group (IPG) launched the Just Energy Transition Partnership for Indonesia (JETP Indonesia).

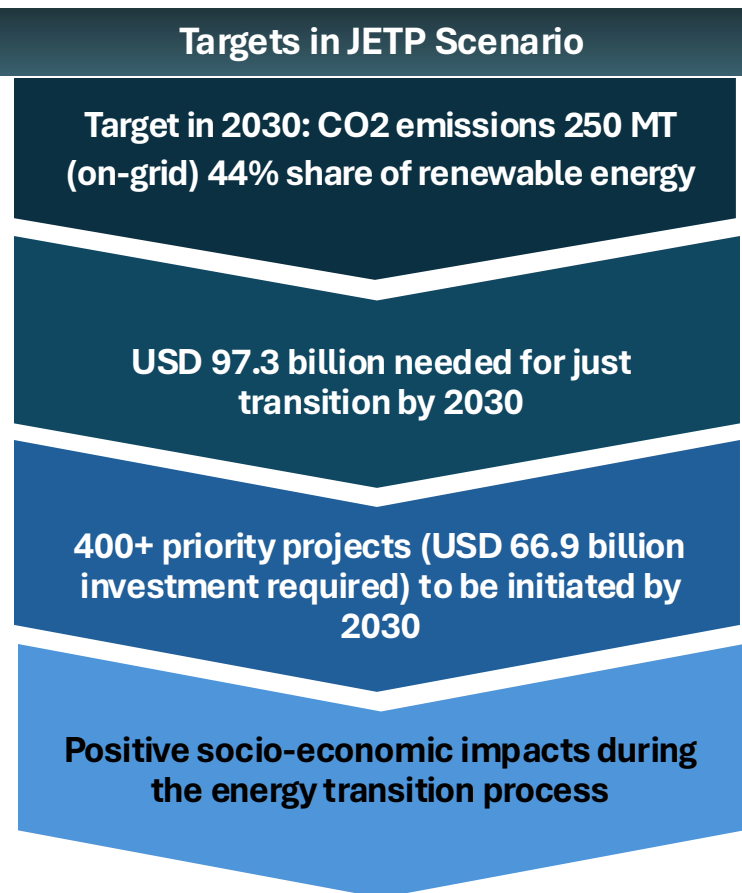


X



Comprehensive Investment and Policy Plan (CIPP) 2023 as a Strategic Recommendation for Indonesia's Energy Transition

Main Result
<p>Technical</p> <ul style="list-style-type: none"> An ambitious yet achievable on-grid power sector roadmap. A list of priority projects in 5 investment areas, compiled from the Government and PLN.
<p>Financing</p> <ul style="list-style-type: none"> Funding needs to meet the electricity sector roadmap and priority projects. Clarification of general terms and conditions of IPG funding provisions.
<p>Policy</p> <ul style="list-style-type: none"> Policy reform recommendations for 7 key topics.
<p>Just Transition</p> <ul style="list-style-type: none"> A just transition framework for managing social, economic and environmental impacts. Opportunities for government stakeholders to advance just transition principles.



Key assumptions for achieving JETP targets
<p> Policies supporting the energy transition are in place and implemented (refer to policy recommendations in CIPP 2023 Chapter 8)</p>
<p>Accessible financing available</p> <ul style="list-style-type: none"> <input type="checkbox"/> Concessional financing for low return projects is easily accessible <input type="checkbox"/> Commercial financing for commercially viable projects <input type="checkbox"/> Grants/TA to support studies, including feasibility studies that will lead to project implementation
<p> There are no obstacles in implementing the project such as land acquisition and licensing.</p>
<p> Procurement is carried out periodically for renewable energy and transmission projects by PLN with bankable PPAs & fair risk sharing between PLN and IPPs.</p>

Source: Coordinating Ministry for Economic Affairs

Fiscal Incentives to Boost the Economy

The government provides fiscal incentives to create a conducive investment climate, especially for industry players in order to boost investment and strengthen domestic industrial structure

TAX HOLIDAY & MINI TAX HOLIDAY

- ❑ **Applicable to new investments**, particularly in **pioneer industries** and core business activities.
- ❑ **18 eligible pioneer industries covering 169 KBLI classifications**, strategically selected for their **strong economic linkages, high added value, advanced technology adoption, and significant national economic impact.**
- ❑ **Corporate income tax incentives:**
 - **100% corporate income tax exemption (full tax holiday)** for up to **20 years**, depending on the investment value.
 - **Mini tax holiday: A 50% corporate income tax reduction for two years** after the initial full exemption period.
 - After the tax holiday and mini tax holiday periods expire, investors remain eligible for a **50% reduction of the standard corporate income tax rate.**
- ❑ **Adjustment due to Global Minimum Tax (GMT) Implementation:**
 - Indonesia has aligned its tax policies with **the 15% Global Minimum Tax (GMT) framework** set by the OECD/G20.
 - Companies benefiting from the **Tax Holiday must comply with the minimum tax requirement**, ensuring both regulatory stability and competitive investment incentives

Source: Coordinating Ministry for Economic Affairs

TAX ALLOWANCE

- ❑ Aims to **increase direct investment in specific business sectors** or **designated regions.**
- ❑ **Incentives include:**
 - **30% net income reduction** based on total investment over six years.
 - **Accelerated depreciation and amortization.**
 - **Reduced income tax on dividends** paid to foreign investors (10% or lower).
 - **Compensation for losses** of up to **10 years.**
- ❑ **Criteria include high investment value for export, significant labor absorption, or high local content.**

INVESTMENT ALLOWANCE

- ❑ Encourages **investment in labor-intensive industries, supporting job creation and workforce absorption.**
- ❑ **Net income deduction of 60%** of the investment in **tangible fixed assets, including land**, used for the taxpayer's main business activities.
- ❑ **Deduction is spread over six years (10% annually)** from the **fiscal year when commercial production starts.**
- ❑ Covers **45 labor-intensive industrial sectors**, employing an **average of 300 workers per tax year**

SUPER DEDUCTION TAX

- Super Deduction for Vocational Activities
- ❑ Encourages industries to **participate in vocational programs**, facilitating **knowledge transfer and skill development.**
 - ❑ **Maximum reduction of 200% in gross income** for costs related to **work practice, apprenticeships, and learning activities.**
- R&D Super Deduction
- ❑ Supports **industry-driven innovation** and the **adoption of the latest technology** in production processes.
 - ❑ **Maximum gross income deduction of 300%** for **eligible R&D expenditures in Indonesia.**

Indonesia benefits from the market and investment potential of various international forums

IEU-CEPA

Indonesia-European Union Comprehensive Economic Partnership

GDP: USD 16.6 Trillion
14% Global Trade
Population: 448 million
27 Countries
(Negotiation Process)

I-EAEU CEPA

Indonesia-Eurasia Economic Union CEPA

GDP: USD 2.5 Trillion
2.5% Global Trade
Population 182 million
5 Countries
(Negotiation Process)

G20

Group of 20

GDP: USD 88 Trillion
75% Global Trade
Population: 4.69 billion
20 Countries
(Member)

OECD

Organization for Economic Co-operation and Development

GDP: USD 59 Trillion
64% Global Trade
Population 1.38 billion
38 Countries
(Accession Process)

RCEP

Regional Comprehensive Economic Partnership

GDP: USD 24.6 Trillion
27.4% Global Trade
Population 2.2 billion
15 Countries
(Member)

BRICS+

Brazil, Russia, India, China, South Africa+

GDP USD 30.8 Trillion
40% Global Trade
Population 3.5 billion
11 Countries
(Member)

ASEAN

Association of South East Asian Nations

GDP: USD 3.3 Trillion
7.7% Global Trade
Population 673 million
11 Countries
(Member)

CP-TPP

The Comprehensive and Progressive Agreement for Trans-Pacific Partnership (CPTPP)

GDP: USD 11 Trillion
14.7% Global Trade
Population: 503 million
11 Countries
(Accession Process)

Membership in the OECD as a Catalyst for Structural Reform in Indonesia

*Indonesia's accession to the OECD is a strategic measure to **ESCAPE THE "MIDDLE INCOME TRAP"** and **ACHIEVE "GOLDEN INDONESIA 2045" VISION***

Structural Reform through OECD Membership (Domestic Reform Catalyst)

Strengthening competitiveness and economic resilience

Enhance sound and equitable **business competitiveness**, accelerate the **transformation of an inclusive digital economy**, and achieve a sustainable and equitable economy.

Improved policy quality and institutional governance

Strengthen **public policies and improve institutional governance** according to **international standards**. This is expected to improve public services and accelerate Indonesia's transition to a developed country.

- Stronger **anti-corruption policy** instruments with the ratification of **OECD Anti-Bribery Convention**.

- **Transparency of the tax sector.** Increased funding for development. Tax optimization of multinational companies operating in Indonesia.

- **Public sector procurement becomes more transparent** so the state budget is more efficient.

- **Better corporate governance and SOEs** so that SOEs can contribute more to the national economy.

Reform Credibility

Demonstrates Indonesia's **commitment to implementing best practices and following international standards**. This strengthens the reputation and credibility of Indonesia's economic reforms and ensures domestic policies remain relevant in the face of global dynamics.

Signaling Indonesia's readiness as a global player

Accession and membership of the OECD shows Indonesia's **readiness to stand alongside other global players** and commitment to the principles of democracy, rule of law, and market openness and transparency.



- Indonesia's **ACCESSION ROADMAPS'S** handover at the OECD MCM in **MAY 2024** made **INDONESIA AS THE FIRST OECD MEMBER CANDIDATE IN ASEAN**.
- Indonesia is optimistic about **COMPLETING ITS OECD ACCESSION** within the **NEXT 3–4 YEARS**, following the submission on **3 June 2025** of its **32-chapter INITIAL MEMORANDUM (IM)** outlining self-assessments of policies, regulations, and alignment with **240 OECD LEGAL INSTRUMENTS**.
- Based on the self-assessment, **MOST OF INDONESIA'S REGULATIONS ARE INLINE** (fully/partially aligned) with OECD legal instruments.
- **ON PROGRESS:** The OECD is preparing **A TECHNICAL REVIEW** of Indonesia's IM, which will involve information gathering through questionnaires, independent studies, and fact-finding missions, with Indonesian ministries and agencies set to engage in the process from Q3 2025 to 2026

IEU-CEPA: Strengthening Economic Diplomacy, Expanding Market, Investment & Partnership

IEU-CEPA TIMELINE



BENEFITS OF IEU-CEPA

a. Market access:

- a. EU: Eliminates 98.61% of tariff lines, covering 100% of import value from Indonesia
- b. Indonesia: Eliminates 97.75% of tariff lines, covering 98.14% of import value from the European Union

b. The European Union will **open greater market access for Indonesia's key products** such as palm oil, footwear, textiles, and fish. The EU has also expressed its readiness to recognize the sustainability of Indonesia's palm oil.

c. "The implementation of **IEU-CEPA is expected to generate substantial economic benefits for Indonesia**, similar to those already realized by Vietnam and Singapore."



2026 STATE BUDGET STRATEGY: 8 MAIN PRIORITY AGENDA

To support the realization of "food, energy, and economic sovereignty toward a resilient, independent, and prosperous Indonesia," the 2026 State Budget will focus on eight key priority programs. In 2026, Indonesia's State Budget will be managed in a sound and credible manner through (a) quality spending, (b) optimization of state revenues, and (c) innovative and sustainable financing.



1. Food Security (Rp164,7 Trillion)

- Food Self-Sufficiency
- Food Price Stabilization
- Welfare of Farmers and Fishermen



2. Energy Security (Rp402,4 Trillion)

- Increase in Oil and Gas Lifting
- Acceleration of Energy Transition
- Price Stabilization



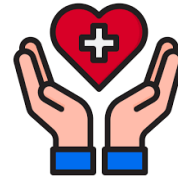
3. Makan Bergizi Gratis (Rp335,0 Trillion)

- Nutritional Quality for School Children, Pregnant Women, and Toddlers
- Empowering MSMEs/Local Economy



4. Education Program (Rp769,1 Trillion)

- PIP and KIP Scholarships for Higher Education
- People's Schools
- Garuda Superior Schools
- Scholarships
- Welfare of Teachers/Lecturers/Educators
- School, PAUD, and Higher Education Operational Assistance



5. Health Program (Rp244 Trillion)

- National Health Insurance Program (JKN)
- Free Health Check (CKG)
- Hospital Revitalization



6. Development of villages cooperatives, and MSMEs

- Red and White Village Cooperatives (KDMP)
- Ease of Access to Basic Staples, Logistics, Fertilizers, and Financial Services



7. Universal Defence

- Modernization of Defence Equipment
- Empowering National Strategic Industries
- Welfare of Soldiers



8. Acceleration for Investment & Global Trade

- State and Private Sector as Economic Drivers
- Strengthening Productive Investment and Global Supply Chains

#UntukEkonomiIndonesia

THANK YOU

Assistant Deputy Minister for Macroeconomic and Fiscal Affairs

Deputy Minister for Economic and Investment Cooperation

@2025